

13, Broadwalk Court, W8 4EE · Flat

£1,800 pcm



Energy Efficiency Rating

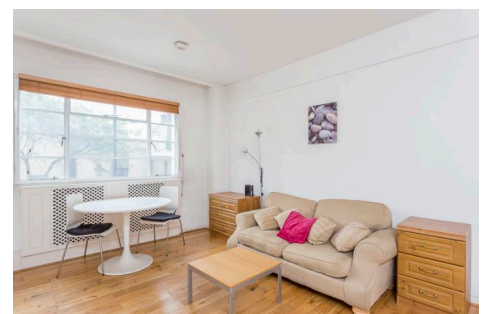


The graph shows the current energy efficiency of your home.

The higher the rating the lower your fuel bills are likely to be.

The potential rating shows the effect of undertaking the recommendations on page 3.

The average energy efficiency rating for a dwelling in England and Wales is band D (rating 60).



ALPS Estates Ltd trading as Pickwick Estates

47 Honor Oak Park, Honor Oak, London SE23 1EA · 020 3397 1166

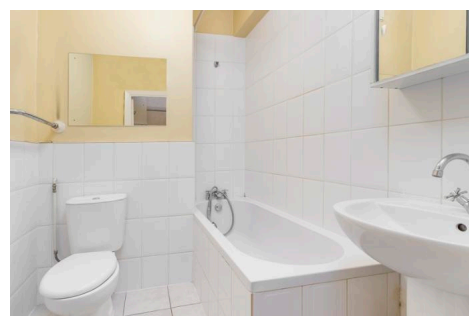
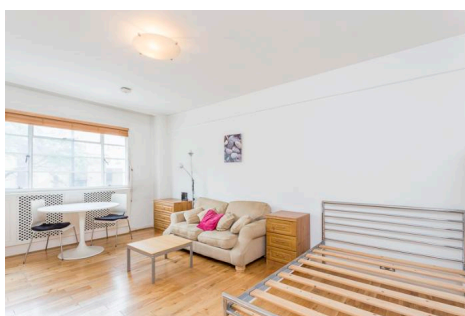
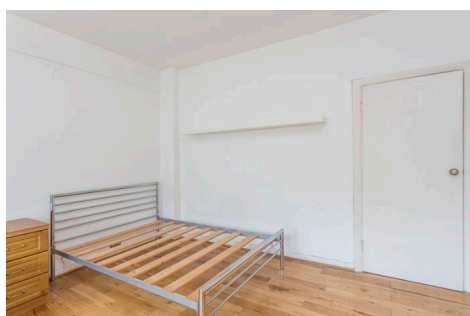
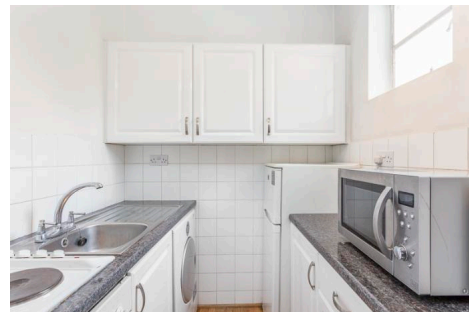
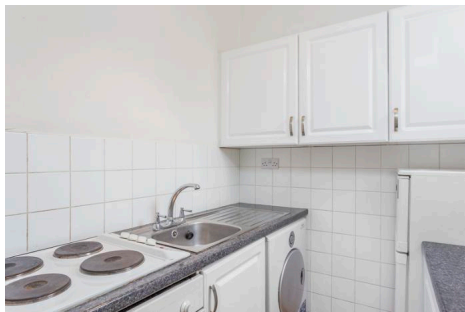
pickwickestates.co.uk · Reg No 7444750 · Registered in England

View this property online: pickwickestates.com/detail/166/W84EE_broadwalk-court.htm

These property details are believed to be correct but their accuracy is not guaranteed and they do not form part of any official contract.

13, Broadwalk Court, W8 4EE · Flat

£1,800 pcm



Property description

AVAILABLE NOW. Hot water and heating included. Looking for a convenient location? Being West of Notting Hill Gate tube station, East of Kensington Gardens and North of Kensington High Street- all within walking distance, you'll have everything on your doorstep!

Situated on the 1st floor of this charming 1930s Art Deco portered block, the flat is in good condition with solid oak wooden flooring throughout, bathroom with washing machine and a newly fitted kitchen with new appliances.

This lovely studio flat benefits from a lift, plenty of storage and it is a real gem for commuters. Available NOW!



ALPS Estates Ltd trading as Pickwick Estates

47 Honor Oak Park, Honor Oak, London SE23 1EA · 020 3397 1166

pickwickestates.co.uk · Reg No 7444750 · Registered in England

View this property online: pickwickestates.com/detail/166/W84EE_broadwalk-court.htm

These property details are believed to be correct but their accuracy is not guaranteed and they do not form part of any official contract.



13, Broadwalk Court, W8 4EE · Flat

£1,800 pcm

Property features

- Set on the 1st floor of this charming 1930s art deco block
- Stunning studio flat with solid oak wooden floors throughout
- Newly fitted kitchen with new appliances
- Bathroom suite with washing machine
- Secure portered block with a lift
- Convenient location for Notting Hill Gate tube and Kensington Gardens- both less than 5 minutes walk
- Available NOW
- Hot water and heating included with the rent
- Furnished/ Unfurnished (tbc)
- Secondary glazing



ALPS Estates Ltd trading as Pickwick Estates

47 Honor Oak Park, Honor Oak, London SE23 1EA · 020 3397 1166

pickwickestates.co.uk · Reg No 7444750 · Registered in England

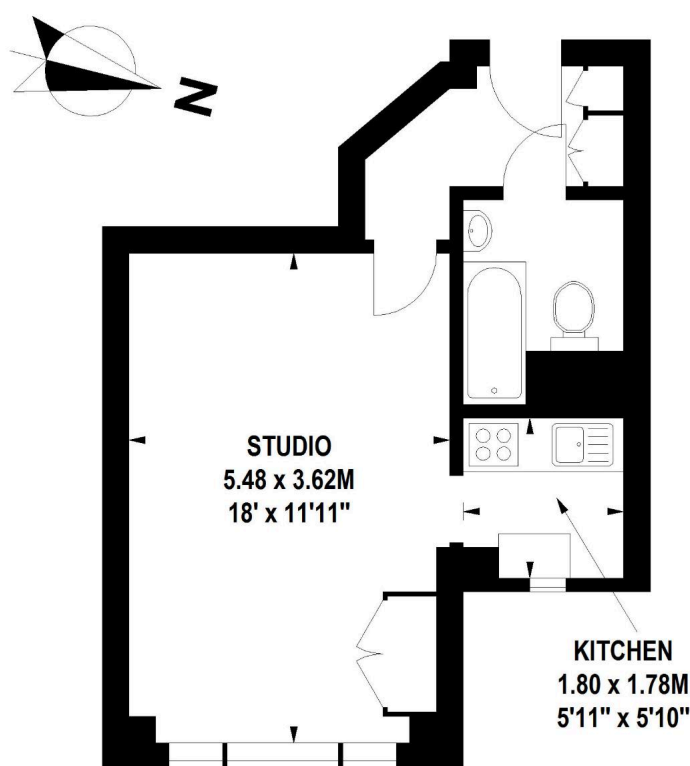
View this property online: pickwickestates.com/detail/166/W84EE_broadwalk-court.htm

These property details are believed to be correct but their accuracy is not guaranteed and they do not form part of any official contract.



Broadwalk Court, W8

Approximate gross internal area
32 sq.m / 344 sq. ft



First Floor

Floor Plan produced for Pickwick Estates by Mays Floorplans © . Tel 020 3397 4594
Illustration for identification purposes only, not to scale
All measurements are maximum, and include wardrobes and window bays where applicable



ALPS Estates Ltd trading as Pickwick Estates

47 Honor Oak Park, Honor Oak, London SE23 1EA · 020 3397 1166

pickwickestates.co.uk · Reg No 7444750 · Registered in England

View this property online: pickwickestates.com/detail/166/W84EE_broadwalk-court.htm

These property details are believed to be correct but their accuracy is not guaranteed and they do not form part of any official contract.