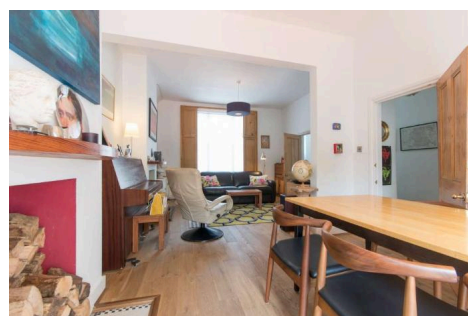
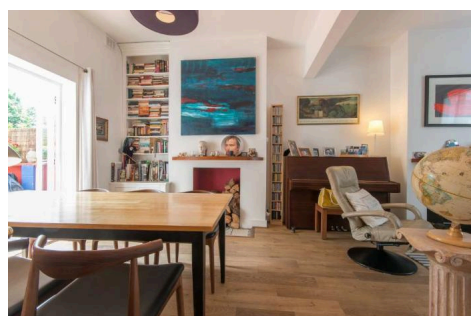


23, Tell Grove, SE22 8RH · 4 bedroom House

£3,100 pcm



ALPS Estates Ltd trading as Pickwick Estates

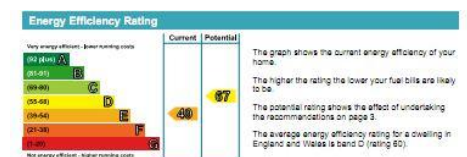
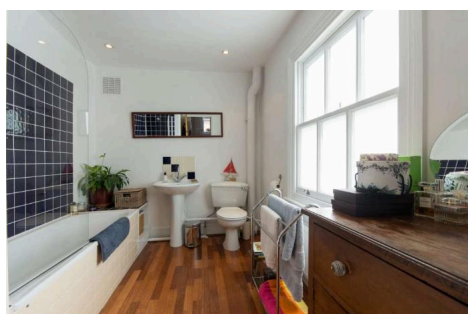
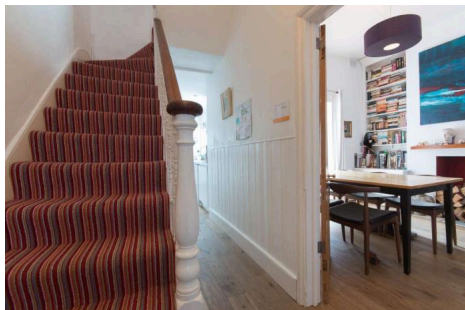
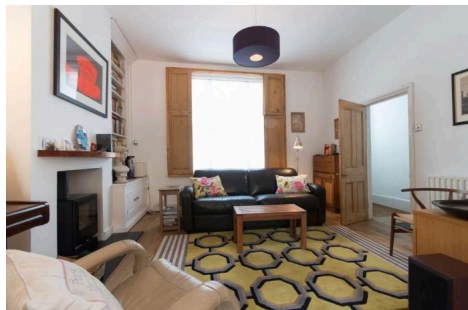
47 Honor Oak Park, Honor Oak, London SE23 1EA · 020 3397 1166

[pickwickestates.co.uk](http://pickwickestates.co.uk) · Reg No 7444750 · Registered in EnglandView this property online: [pickwickestates.com/detail/1820/SE228RH\\_tell-grove.htm](http://pickwickestates.com/detail/1820/SE228RH_tell-grove.htm)

*These property details are believed to be correct but their accuracy is not guaranteed and they do not form part of any official contract.*

23, Tell Grove, SE22 8RH · 4 bedroom House

£3,100 pcm



## Property description

NOT SUITABLE FOR SHARERS. This stunning four-bedroom, two-bathroom property presents an exceptional opportunity for those seeking a spacious and elegant home. The house boasts a large reception room, perfect for entertaining, and a fully fitted kitchen, ideal for culinary enthusiasts.

Conveniently situated, this residence is within close proximity to a wealth of amenities. Residents will enjoy easy access to shops, restaurants, and public transport, making everyday life effortlessly convenient. The nearest bus stop is just a short walk away, while the East Dulwich, North Dulwich, and Peckham Rye railway stations are all within 2 kilometers, providing excellent connectivity to the rest of London.

For families, the property is surrounded by leading educational institutions. The three most popular primary schools within a 3-kilometer radius include Goodrich Community Primary School, St. Anthony's Catholic Primary School, and Heber Primary School. Additionally, the three most sought-after secondary schools nearby are The Charter School East Dulwich, Harris Girls' Academy East Dulwich, and The Villa School. Moreover, the proximity to colleges and universities such as Dulwich College, King's College London, and London South Bank University makes this location ideal for students.

In addition to its educational offerings, the area provides an array of essential amenities, including supermarkets like Tesco Express (0.5km) and Sainsbury's (0.8km), as well as a variety of restaurants and cafes. The vibrant neighborhood also features



ALPS Estates Ltd trading as Pickwick Estates

47 Honor Oak Park, Honor Oak, London SE23 1EA · 020 3397 1166

[pickwickestates.co.uk](http://pickwickestates.co.uk) · Reg No 7444750 · Registered in England

View this property online: [pickwickestates.com/detail/1820/SE228RH\\_tell-grove.htm](http://pickwickestates.com/detail/1820/SE228RH_tell-grove.htm)

*These property details are believed to be correct but their accuracy is not guaranteed and they do not form part of any official contract.*

23, Tell Grove, SE22 8RH · 4 bedroom House

£3,100 pcm

healthcare facilities, fitness centers, and entertainment options, ensuring a well-rounded lifestyle for residents.

Embrace this exceptional opportunity to rent a property that offers the perfect blend of Victorian elegance and modern convenience. Don't miss the chance to reside in this prosperous and vibrant area, surrounded by all the amenities you could desire. Available from January 2025

### Property features

- Beautiful Victorian family home
- Short walk to East Dulwich station
- Nearby local sought after schools
- Four bedrooms
- Unfurnished
- Available from January 2025
- NOT SUITABLE FOR SHARERS



ALPS Estates Ltd trading as Pickwick Estates

47 Honor Oak Park, Honor Oak, London SE23 1EA · 020 3397 1166

[pickwickestates.co.uk](https://pickwickestates.co.uk) · Reg No 7444750 · Registered in England

View this property online: [pickwickestates.com/detail/1820/SE228RH\\_tell-grove.htm](https://pickwickestates.com/detail/1820/SE228RH_tell-grove.htm)


*These property details are believed to be correct but their accuracy is not guaranteed and they do not form part of any official contract.*

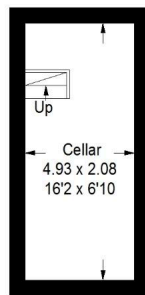


## Tell Grove

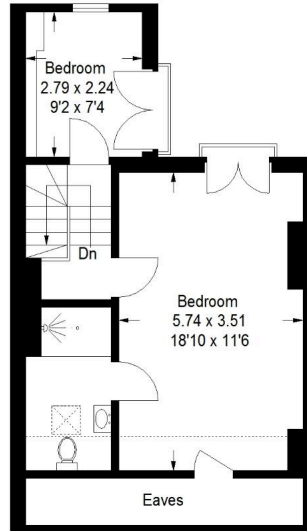
Approximate Gross Internal Area (Excluding Eaves)  
141.6 sq m / 1524 sq ft



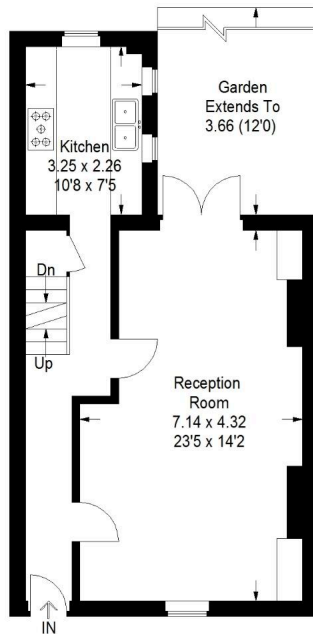
 = Reduced headroom  
below 1.5 m / 5'0"



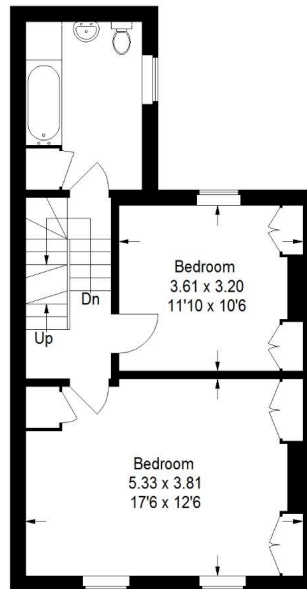
Cellar



Second Floor



Ground Floor



First Floor

Illustration for identification purposes only,  
measurements are approximate.  
Drawn for Pickwick Estates.



ALPS Estates Ltd trading as Pickwick Estates

47 Honor Oak Park, Honor Oak, London SE23 1EA · 020 3397 1166

[pickwickestates.co.uk](http://pickwickestates.co.uk) · Reg No 7444750 · Registered in England

View this property online: [pickwickestates.com/detail/1820/SE228RH\\_tell-grove.htm](http://pickwickestates.com/detail/1820/SE228RH_tell-grove.htm)

*These property details are believed to be correct but their accuracy is not guaranteed and they do not form part of any official contract.*