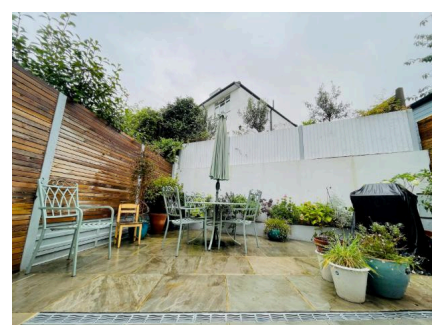
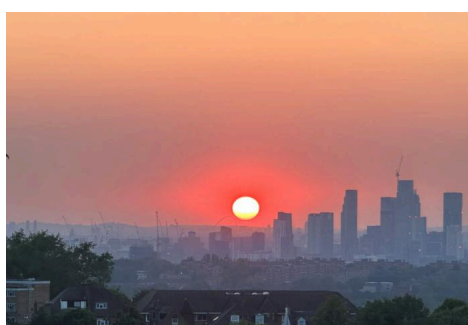


33a , Ringmore Rise , SE23 3DF · 2 bedroom House

£2,100 pcm



ALPS Estates Ltd trading as Pickwick Estates

47 Honor Oak Park, Honor Oak, London SE23 1EA · 020 3397 1166

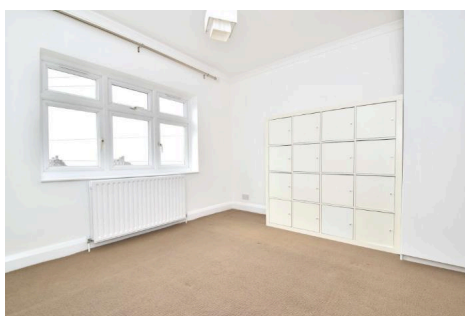
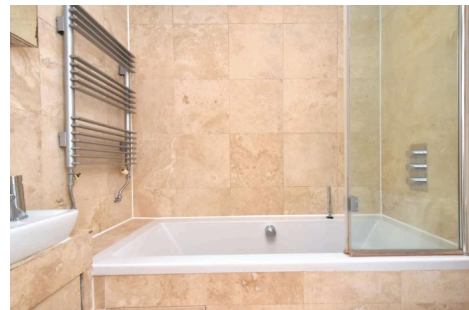
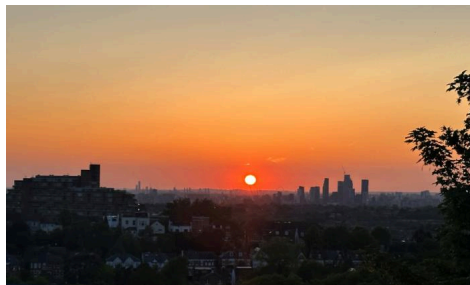
pickwickestates.co.uk · Reg No 7444750 · Registered in England

View this property online: pickwickestates.com/detail/3601/SE233DF_ringmore-rise.htm

These property details are believed to be correct but their accuracy is not guaranteed and they do not form part of any official contract.

33a , Ringmore Rise , SE23 3DF · 2 bedroom House

£2,100 pcm



Property description

Available November 2025. Perched at the top of Forest Hill behind the famous Horniman Museum, with possibly some of the best views in South East London is this newly refurbished 2 bedroom semi detached house with a private rear garden.

The house has been completely renovated throughout and benefits from double glazing throughout, a downstairs utility room with toilet, a low maintenance private secluded rear garden and a raised front patio with spectacular views over the whole of London.

The property is located on this exclusive, quiet residential street, twixt Forest Hill and Honor Oak Park with plenty of amenities and train stations within reach.

The house is set back from the street with steps leading up the the raised ground floor. The front garden is tiered with the top section converted into a patio offering stunning West facing views over the London Skyline, in summer this is a lovely spot to sit out and watch the spectacular sunsets.

The entrance to the house is protected by a porch with pillars with a fitted security light above.

Upon entry there is a large reception room that spans the whole length of the house with newly fitted engineered grey flooring



ALPS Estates Ltd trading as Pickwick Estates

47 Honor Oak Park, Honor Oak, London SE23 1EA · 020 3397 1166

pickwickestates.co.uk · Reg No 7444750 · Registered in England

View this property online: pickwickestates.com/detail/3601/SE233DF_ringmore-rise.htm

These property details are believed to be correct but their accuracy is not guaranteed and they do not form part of any official contract.

33a , Ringmore Rise , SE23 3DF · 2 bedroom House

£2,100 pcm

and a storage cupboard under the stairs.

At the far end of the room are patio doors that leads to a neat patio garden with stylish grey sandstone slabs, horizontal slatted fencing, a flower bed at the back full of mature plants and shrubs and a very handy outdoor butler sink with a tap above. The garden is secluded and very private a lovely space to have BBQ's or a coffee in the morning.

The kitchen has plenty of wall and base mounted units with a newly fitted grey worktop above, housing the sink that sits under the window over looking the garden. The oven, hob and extractor are also newly fitted and are accompanied by a tall fridge freezer and a stainless steel dishwasher.

Adjacent to the kitchen is the utility room which has a guest toilet, wash hand basin and a heated towel rail. Hidden behind built in cupboards is a Bosch washing machine with a drier stacked above.

Upstairs are two good size double bedrooms both have carpeted floors and double glazed windows. The bedroom at the front has even better views of London, you can literally sit in bed and watch the London Eye turn! The bedroom at the rear overlooks the garden.

Between the bedrooms is the bathroom which is clad in Travertine tiles, there is a large bath with a luxurious rain shower above, a heated towel rail on the wall, a wash hand basin with a mirrored vanity unit above and a contemporary style toilet.

Ringmore Rise is a very popular location and a remarkably quiet street, there is a very good community of local residents and great amenities nearby. There are a number of highly rated Ofstead schools locally (Horniman and Fairlawn Primary schools). The rear entrance of Horniman gardens literally around the corner and the museum there is great fun for the family! Ringmore Rise is conveniently flanked by Forest Hill on one side and Honor Oak Park on the other, both areas offering a bustling array of shops, bars, cafes and restaurants for all ages. The nearest station is Forest Hill which is less than 800 meters and Honor Oak Park is also nearby (0.7 miles). Both have the efficient Overground service and National Rail to London Bridge. Nearby green leafy open spaces can be found at Horniman Gardens, One Tree Hill, Dulwich Park and Blythe Hill Fields, most of which offer fantastic views of the London skyline.



ALPS Estates Ltd trading as Pickwick Estates

47 Honor Oak Park, Honor Oak, London SE23 1EA · 020 3397 1166

pickwickestates.co.uk · Reg No 7444750 · Registered in England

View this property online: pickwickestates.com/detail/3601/SE233DF_ringmore-rise.htm

These property details are believed to be correct but their accuracy is not guaranteed and they do not form part of any official contract.



33a , Ringmore Rise , SE23 3DF · 2 bedroom House

£2,100 pcm

Property features

- Newly refurbished 2 bedroom semi detached house
- Spectacular views of the London Skyline
- Completely renovated throughout
- Private rear garden and a front West facing patio with stunning views of London
- Fully fitted kitchen with new worktops
- Reception room with newly laid engineered grey wood effect flooring
- Utility room with toilet and wash hand basin
- Double glazing throughout
- Stylish bathroom with shower above the bath
- Close to Honor Oak Park and Forest Hill stations, Horniman gardens, schools and local amenities.



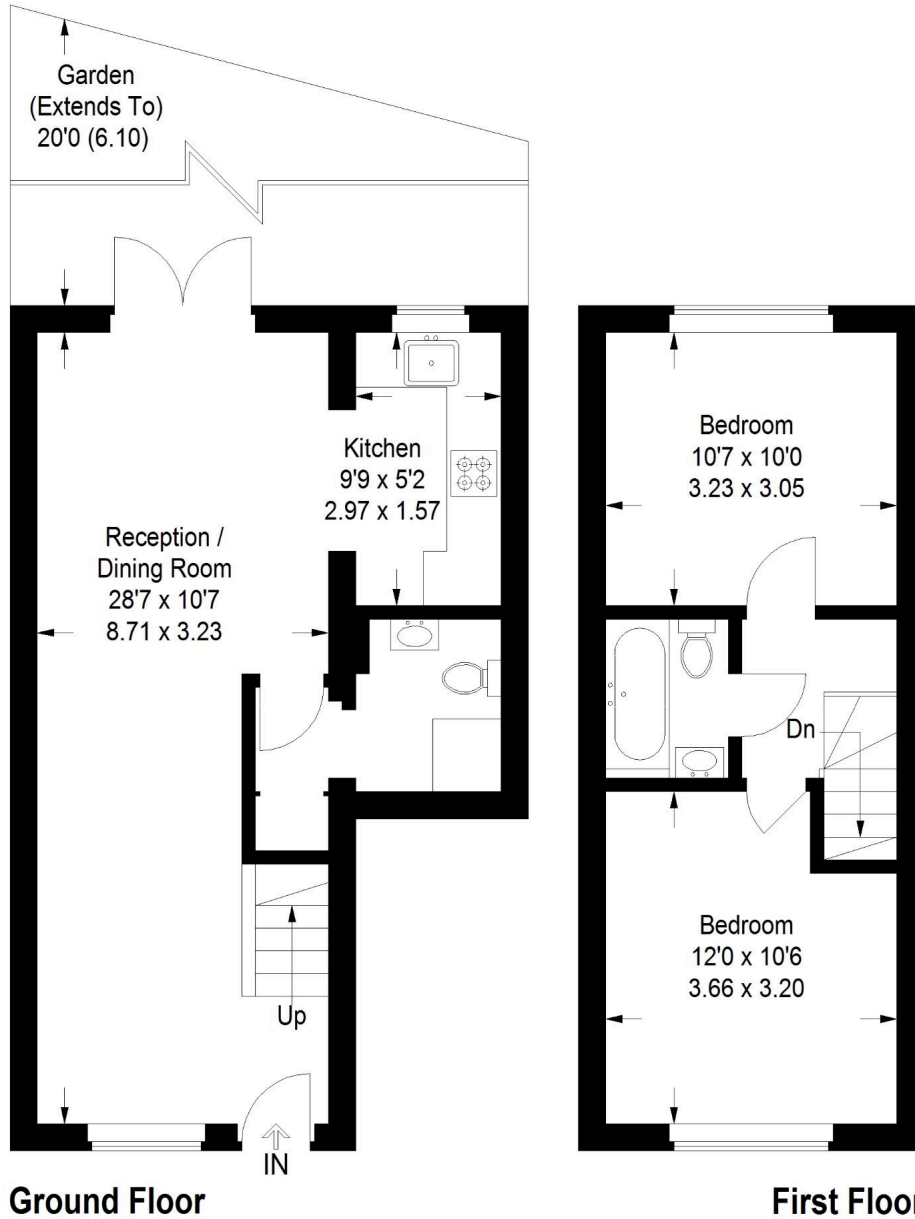
ALPS Estates Ltd trading as Pickwick Estates

47 Honor Oak Park, Honor Oak, London SE23 1EA · 020 3397 1166

pickwickestates.co.uk · Reg No 7444750 · Registered in England

View this property online: pickwickestates.com/detail/3601/SE233DF_ringmore-rise.htm

These property details are believed to be correct but their accuracy is not guaranteed and they do not form part of any official contract.



Approximate Gross Internal Area
708 sq ft / 65.8 sq m

Illustration for identification purposes only,
measurements are approximate.
Drawn for Pickwick Estates.



ALPS Estates Ltd trading as Pickwick Estates

47 Honor Oak Park, Honor Oak, London SE23 1EA · 020 3397 1166

pickwickestates.co.uk · Reg No 7444750 · Registered in England

View this property online: pickwickestates.com/detail/3601/SE233DF_ringmore-rise.htm

These property details are believed to be correct but their accuracy is not guaranteed and they do not form part of any official contract.