

41 , Woodwarde Road, SE22 8UN · 5 bedroom House

£4,500 pcm



ALPS Estates Ltd trading as Pickwick Estates

47 Honor Oak Park, Honor Oak, London SE23 1EA · 020 3397 1166

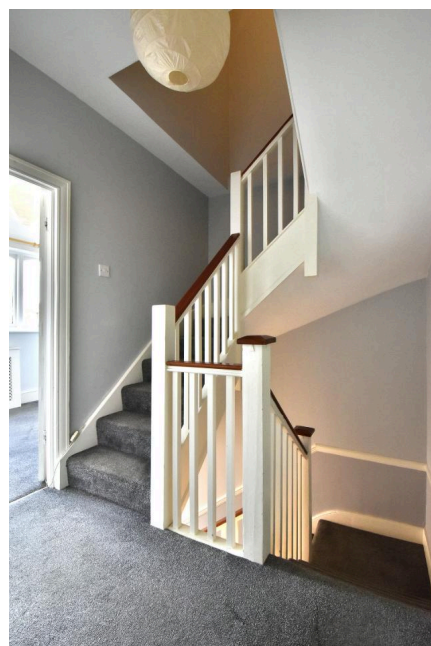
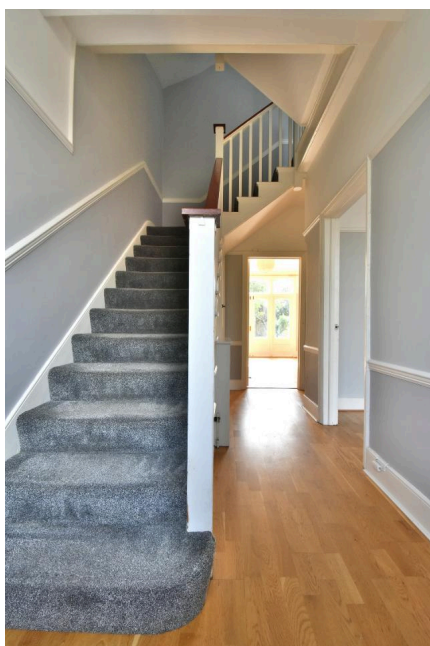
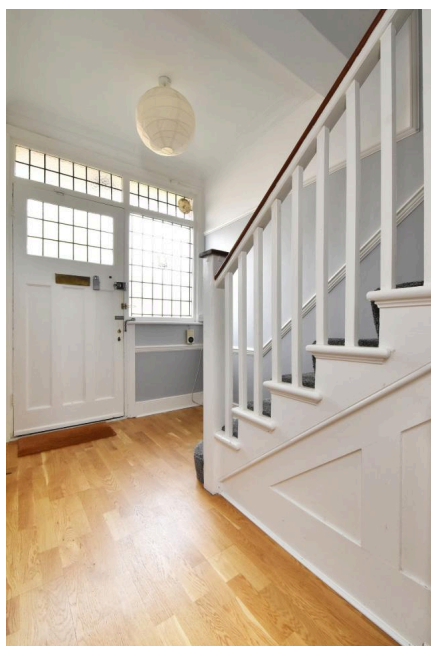
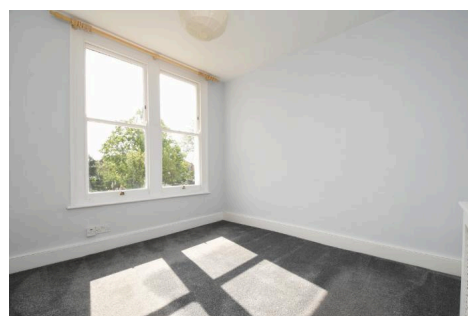
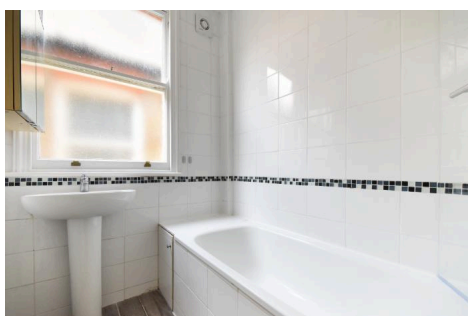
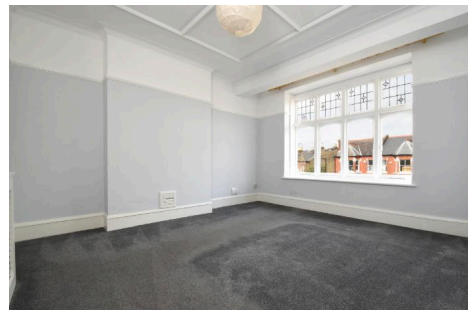
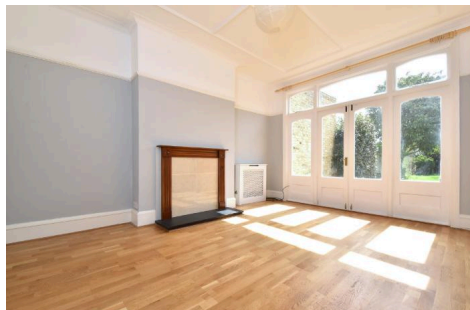
pickwickestates.co.uk · Reg No 7444750 · Registered in England

View this property online: pickwickestates.com/detail/408/SE228UN_woodwarde-road.htm

These property details are believed to be correct but their accuracy is not guaranteed and they do not form part of any official contract.

41 , Woodwarde Road, SE22 8UN · 5 bedroom House

£4,500 pcm



ALPS Estates Ltd trading as Pickwick Estates

47 Honor Oak Park, Honor Oak, London SE23 1EA · 020 3397 1166

pickwickestates.co.uk · Reg No 7444750 · Registered in England

View this property online: pickwickestates.com/detail/408/SE228UN_woodwarde-road.htm

These property details are believed to be correct but their accuracy is not guaranteed and they do not form part of any official contract.

41 , Woodwarde Road, SE22 8UN · 5 bedroom House

£4,500 pcm



Property description

This beautifully freshly decorated five-bedroom period home is situated in a sought-after location, close to Dulwich Village and Dulwich Park. The property boasts spacious living areas, including two large reception rooms, a fully fitted kitchen with brand-new appliances, and a downstairs WC. The highlight of the home is the generous 100ft rear garden, perfect for families and outdoor entertaining.

Upstairs, you'll find four double bedrooms, one single bedroom, a family bathroom, and a separate WC, offering ample space for comfortable living.

Available immediately, this charming home is perfect for families looking to settle in a prime location with excellent schools, green spaces, and transport links nearby.

Property features

- Freshly decorated
- 5 (4 doubles, 1 single)
- 2 Reception rooms
- 100ft Garden
- Excellent links to central London
- Council Tax Band G



ALPS Estates Ltd trading as Pickwick Estates

47 Honor Oak Park, Honor Oak, London SE23 1EA · 020 3397 1166

pickwickestates.co.uk · Reg No 7444750 · Registered in England

View this property online: pickwickestates.com/detail/408/SE228UN_woodwarde-road.htm

These property details are believed to be correct but their accuracy is not guaranteed and they do not form part of any official contract.



Woodwarde Road



Approximate Gross Internal Area
(Excluding Eaves)
166.1 sq m / 1788 sq ft

Illustration for identification purposes only,
measurements are approximate.
Drawn for Pickwick Estates.



ALPS Estates Ltd trading as Pickwick Estates

47 Honor Oak Park, Honor Oak, London SE23 1EA · 020 3397 1166

pickwickestates.co.uk · Reg No 7444750 · Registered in England

View this property online: pickwickestates.com/detail/408/SE228UN_woodwarde-road.htm

These property details are believed to be correct but their accuracy is not guaranteed and they do not form part of any official contract.