



202, Grierson Road, SE23 1NU · 3 bedroom House

£2,750 pcm



Score	Energy rating	Current	Potential
92+	A		
81-91	B		84 B
69-80	C	73 C	
55-68	D		
39-54	E		
21-38	F		
1-20	G		



ALPS Estates Ltd trading as Pickwick Estates

47 Honor Oak Park, Honor Oak, London SE23 1EA · 020 3397 1166

[pickwickestates.co.uk](http://pickwickestates.co.uk) · Reg No 7444750 · Registered in England

View this property online: [pickwickestates.com/detail/4154/SE231NU\\_grierson-road.htm](http://pickwickestates.com/detail/4154/SE231NU_grierson-road.htm)

*These property details are believed to be correct but their accuracy is not guaranteed and they do not form part of any official contract.*

202, Grierson Road, SE23 1NU · 3 bedroom House

£2,750 pcm



### Property description

NOT SUITABLE FOR SHARERS. This fantastic three bedroom, semi-detached house, located a short walk away from Honor Oak Park station. The property comprises of kitchen, reception room and separate toilet and utility area on the ground floor. Upstairs is 3 bedrooms and a family bathroom. Added benefits include off-street parking, a garage and a 100ft west-facing rear garden.

The area is much sought after due to its transport links into central and east London and the proximity of several good primary schools including Stillness and Dalmain. Honor Oak Park station provides direct mainline services to London Bridge. In addition, there are Overground services northwards to Shoreditch and Highbury & Islington. You can change at Canada Water for easy access to Canary Wharf. Crofton Park station is also within easy reach for services into Blackfriars.

Available December 2025



ALPS Estates Ltd trading as Pickwick Estates

47 Honor Oak Park, Honor Oak, London SE23 1EA · 020 3397 1166

[pickwickestates.co.uk](http://pickwickestates.co.uk) · Reg No 7444750 · Registered in England

View this property online: [pickwickestates.com/detail/4154/SE231NU\\_grierson-road.htm](http://pickwickestates.com/detail/4154/SE231NU_grierson-road.htm)

*These property details are believed to be correct but their accuracy is not guaranteed and they do not form part of any official contract.*



202, Grierson Road, SE23 1NU · 3 bedroom House

£2,750 pcm

## Property features

- Semi Detached House
- Three Bedrooms
- Two Receptions & Downstairs WC
- 100ft West-facing rear garden
- Parking & Garage
- Close To Station
- NOT SUITABLE FOR SHARERS.
- Available December 2025
- Council Tax Band D Lewisham
- EPC C



ALPS Estates Ltd trading as Pickwick Estates

47 Honor Oak Park, Honor Oak, London SE23 1EA · 020 3397 1166

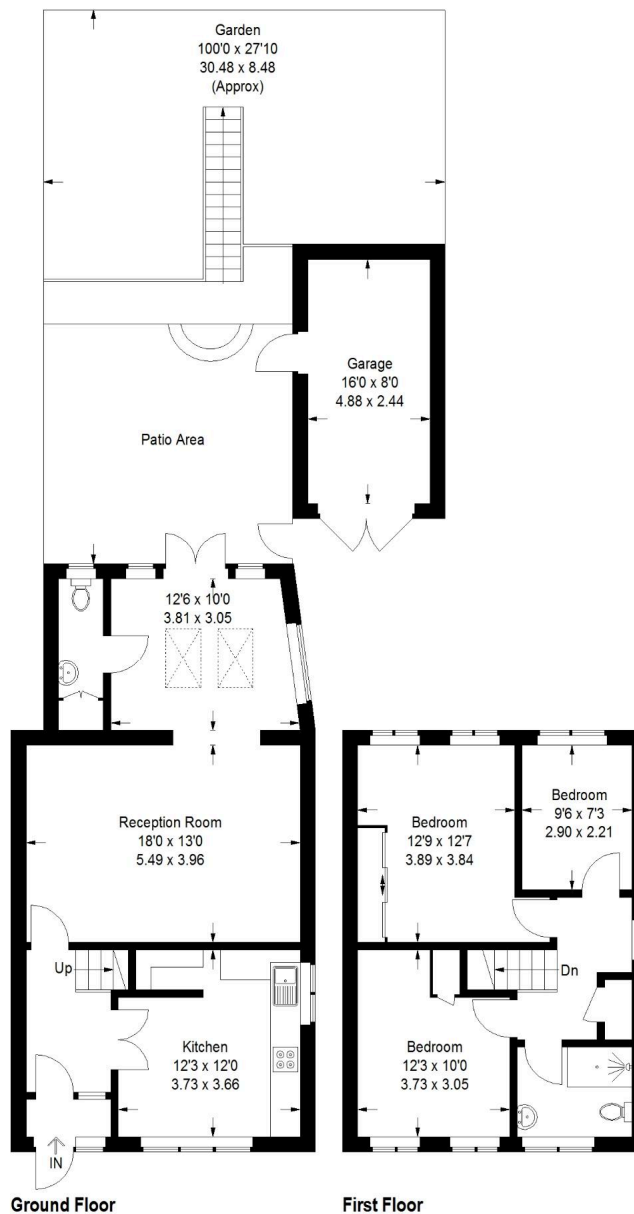
[pickwickestates.co.uk](https://pickwickestates.co.uk) · Reg No 7444750 · Registered in England

View this property online: [pickwickestates.com/detail/4154/SE231NU\\_grierson-road.htm](https://pickwickestates.com/detail/4154/SE231NU_grierson-road.htm)

*These property details are believed to be correct but their accuracy is not guaranteed and they do not form part of any official contract.*



## Grierson Road



Approximate Gross Internal Area (Including Garage)  
1238 sq ft / 115.0 sq m  
(Excluding Garage)  
1102 sq ft / 102.4 sq m

Illustration for identification purposes only,  
measurements are approximate.  
Drawn for Pickwick Estates.



ALPS Estates Ltd trading as Pickwick Estates

47 Honor Oak Park, Honor Oak, London SE23 1EA · 020 3397 1166

[pickwickestates.co.uk](http://pickwickestates.co.uk) · Reg No 7444750 · Registered in England

View this property online: [pickwickestates.com/detail/4154/SE231NU\\_grierson-road.htm](http://pickwickestates.com/detail/4154/SE231NU_grierson-road.htm)

These property details are believed to be correct but their accuracy is not guaranteed and they do not form part of any official contract.