

4, Plough Lane , SE22 8JL · 4 bedroom House

£3,500 pcm



Score	Energy rating	Current	Potential
92+	A		
81-91	B		
69-80	C	73 C	83 B
55-68	D		
39-54	E		
21-38	F		
1-20	G		



ALPS Estates Ltd trading as Pickwick Estates

47 Honor Oak Park, Honor Oak, London SE23 1EA · 020 3397 1166

[pickwickestates.co.uk](http://pickwickestates.co.uk) · Reg No 7444750 · Registered in England

View this property online: [pickwickestates.com/detail/4566/SE228JL\\_plough-lane.htm](http://pickwickestates.com/detail/4566/SE228JL_plough-lane.htm)

*These property details are believed to be correct but their accuracy is not guaranteed and they do not form part of any official contract.*

4, Plough Lane , SE22 8JL · 4 bedroom House

£3,500 pcm



## Property description

AVAILABLE NOW - Welcome to your new home at Plough Lane, This newly redecorated four-bedroom apartment offers an exceptional living experience across three floors, making it perfect for families. Nestled in the heart of East Dulwich, it seamlessly blends modern comfort with charming features, creating a warm and inviting atmosphere for you to call home.

Upon entering, you are greeted by a modern fitted kitchen and a spacious double reception room that leads to a bright conservatory, providing an ideal space for both entertaining and relaxation. The conservatory opens onto a manageable, low-maintenance garden, offering the perfect setting for outdoor dining and leisure. Additionally, there is a convenient downstairs WC on this floor.

The first floor houses three well-proportioned bedrooms, one of which features a private balcony overlooking the garden. Moving up to the second floor, you'll find the master bedroom with an en-suite shower and a large terrace balcony, offering breathtaking views of the London skyline. The entire property has been freshly redecorated and fitted with brand-new carpets throughout, ensuring a pristine and comfortable living environment.

Conveniently located on a quiet little slip road, this property is within walking distance to the vibrant Lordship Lane, which boasts an array of shops, cafes, and restaurants. Furthermore, excellent transport links are readily available, providing effortless access to central London.



ALPS Estates Ltd trading as Pickwick Estates

47 Honor Oak Park, Honor Oak, London SE23 1EA · 020 3397 1166

[pickwickestates.co.uk](http://pickwickestates.co.uk) · Reg No 7444750 · Registered in England

View this property online: [pickwickestates.com/detail/4566/SE228JL\\_plough-lane.htm](http://pickwickestates.com/detail/4566/SE228JL_plough-lane.htm)

*These property details are believed to be correct but their accuracy is not guaranteed and they do not form part of any official contract.*



4, Plough Lane , SE22 8JL · 4 bedroom House

£3,500 pcm

Plough Lane, is conveniently located near a range of well-regarded schools, making it an ideal spot for families. Nearby primary school options include St Anthony's Catholic Primary School, Heber Primary School and for secondary education, Harris Boys' Academy, offers an 'Outstanding' rated environment for boys aged 11-18. These schools are part of the area's strong educational offering.

This exceptional apartment is available now and can be rented part-furnished, offering flexibility to meet your needs. With its quality, space, and fabulous location, early viewing is highly recommended to fully appreciate all that this property has to offer. - NOT SUITABLE FOR SHARERS.

## Property features

- Four-bedroom End of terrace
- Neutrally decorated throughout & brand new carpets
- Generous living space across three floors
- Master bedroom with en-suite shower room
- Stunning views of the London skyline
- Available now
- NOT SUITABLE FOR SHARERS



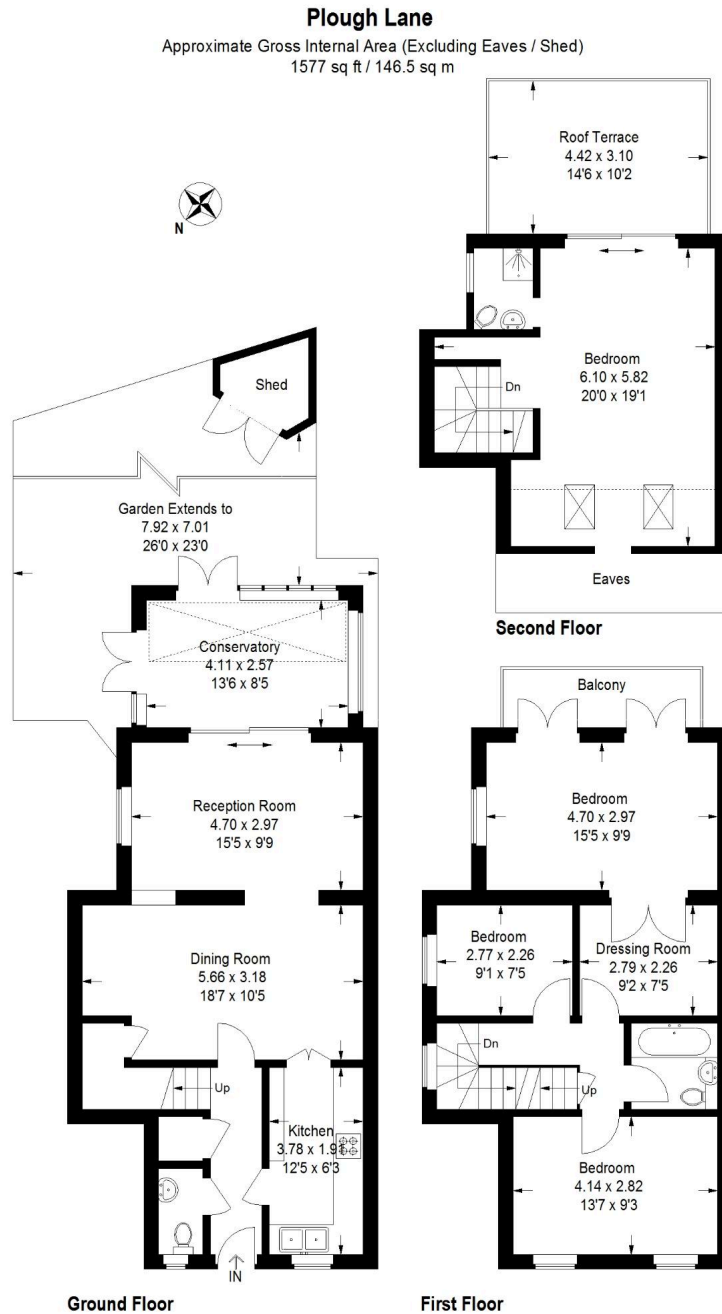
ALPS Estates Ltd trading as Pickwick Estates

47 Honor Oak Park, Honor Oak, London SE23 1EA · 020 3397 1166

[pickwickestates.co.uk](http://pickwickestates.co.uk) · Reg No 7444750 · Registered in England

View this property online: [pickwickestates.com/detail/4566/SE228JL\\_plough-lane.htm](http://pickwickestates.com/detail/4566/SE228JL_plough-lane.htm)

*These property details are believed to be correct but their accuracy is not guaranteed and they do not form part of any official contract.*



Reduced Headroom Below 1.5 M / 5'0"

Illustration for identification purposes only,  
measurements are approximate.  
Drawn for Pickwick Estates



ALPS Estates Ltd trading as Pickwick Estates

47 Honor Oak Park, Honor Oak, London SE23 1EA · 020 3397 1166

[pickwickestates.co.uk](http://pickwickestates.co.uk) · Reg No 7444750 · Registered in England

View this property online: [pickwickestates.com/detail/4566/SE228JL\\_plough-lane.htm](http://pickwickestates.com/detail/4566/SE228JL_plough-lane.htm)

*These property details are believed to be correct but their accuracy is not guaranteed and they do not form part of any official contract.*