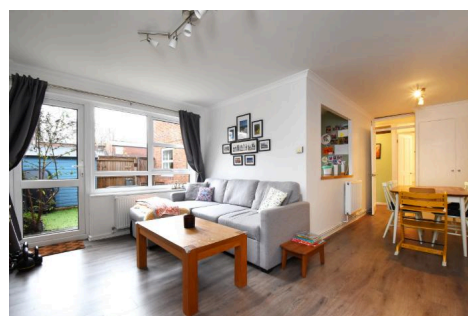
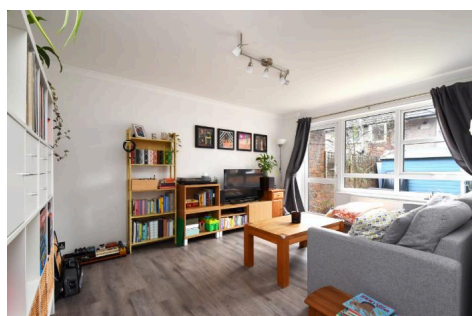


64, Ewart Road, SE23 1BQ · 2 bedroom Flat

£450,000



ALPS Estates Ltd trading as Pickwick Estates

47 Honor Oak Park, Honor Oak, London SE23 1EA · 020 3397 1166

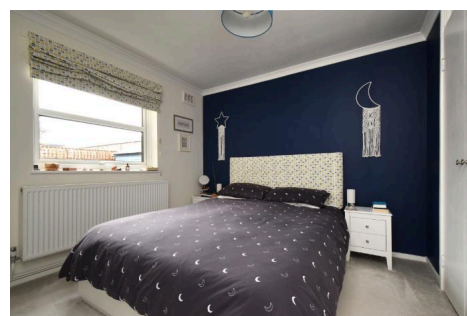
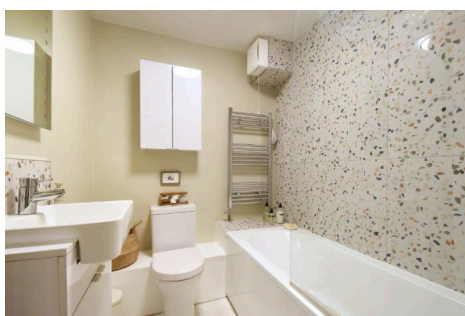
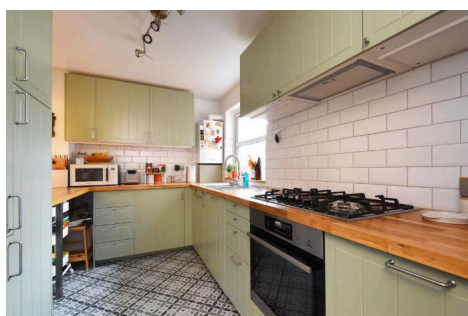
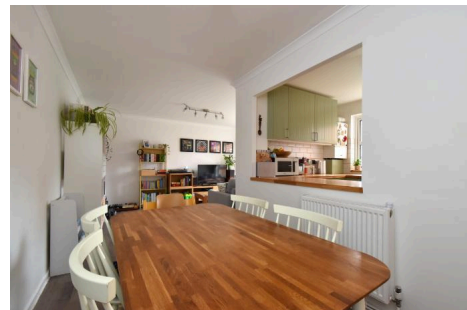
pickwickestates.co.uk · Reg No 7444750 · Registered in England

View this property online: pickwickestates.com/detail/4655/SE231BQ_ewart-road.htm

These property details are believed to be correct but their accuracy is not guaranteed and they do not form part of any official contract.

64, Ewart Road, SE23 1BQ · 2 bedroom Flat

£450,000



Property description

A beautifully refurbished and generously proportioned two double bedroom ground floor maisonette, offering its own private entrance and a secluded landscaped garden.

Ideally positioned within easy walking distance of Forest Hill and Honor Oak Park stations, the property provides excellent transport links and convenient access to a wide range of local amenities, making commuting into Central London both quick and straightforward.

Extending to approximately 840 sq ft (78 sq m), the accommodation is well laid out and filled with natural light, with double glazing throughout and well-proportioned rooms typical of a quality purpose-built home.

Accessed via a gated entrance, the private walled garden offers a high degree of privacy and security and has been thoughtfully landscaped for low maintenance, with astro turf lawn and paved seating areas – ideal for outdoor dining, entertaining or relaxing during the warmer months.

Internally, a long entrance hallway provides excellent storage, including a versatile space suitable for a home office or large cupboard. Both bedrooms are generous doubles, one benefiting from fitted storage, while the newly refurbished contemporary family bathroom features a modern white suite, Terrazzo-tiled walls and a heated towel rail.



ALPS Estates Ltd trading as Pickwick Estates

47 Honor Oak Park, Honor Oak, London SE23 1EA · 020 3397 1166

pickwickestates.co.uk · Reg No 7444750 · Registered in England

View this property online: pickwickestates.com/detail/4655/SE231BQ_ewart-road.htm

These property details are believed to be correct but their accuracy is not guaranteed and they do not form part of any official contract.



64, Ewart Road, SE23 1BQ · 2 bedroom Flat

£450,000

The separate newly fitted kitchen is well designed, offering solid wooden worktops, metro-tiled splashbacks, ample cabinetry and integrated appliances, including a five-ring gas hob. A cleverly opened section connects the kitchen to the dining area, enhancing natural light and flow.

The bright reception room enjoys full-width windows and direct access to the garden via patio doors, creating a seamless indoor-outdoor living space.

The property is well served by public transport links to Dulwich, Peckham, Lewisham and Catford, is within the catchment for reputable local schools, and benefits from a variety of shops, cafés and green spaces all within walking distance.

Property features

- Generously proportioned two double bedroom ground floor maisonette
- Private entrance and a secluded landscaped garden
- Offering well laid out accommodation of 840 sq ft (78 sq m)
- Newly refurbished contemporary family bathroom
- Newly fitted kitchen with plenty of storage
- Dining area
- Reception room with full width windows
- Plenty of storage
- Close to local amenities, green open spaces and a number of highly rated schools
- Walking distance of Forest Hill and Honor Oak Park stations



ALPS Estates Ltd trading as Pickwick Estates

47 Honor Oak Park, Honor Oak, London SE23 1EA · 020 3397 1166

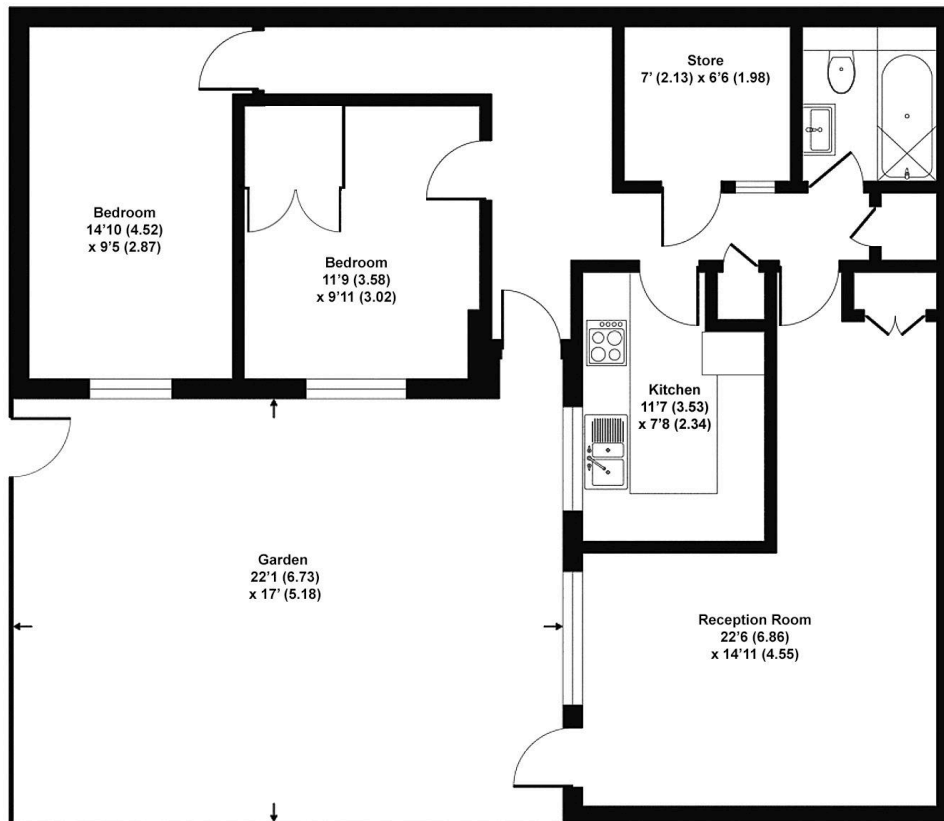
pickwickestates.co.uk · Reg No 7444750 · Registered in England

View this property online: pickwickestates.com/detail/4655/SE231BQ_ewart-road.htm

These property details are believed to be correct but their accuracy is not guaranteed and they do not form part of any official contract.



Ewart Road



Ground Floor

Approximate Gross Internal Area
840 sq ft / 78 sq m

Illustration for identification purposes only,
measurements are approximate.

