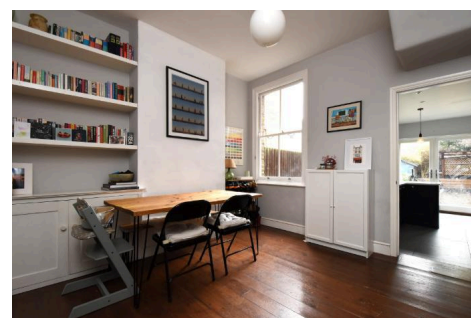
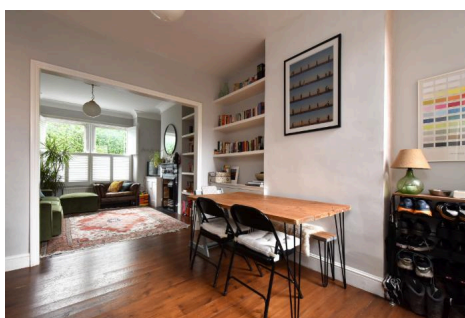


32, Whatman Road, SE23 1EZ · 5 bedroom House

£3,500 pcm



ALPS Estates Ltd trading as Pickwick Estates

47 Honor Oak Park, Honor Oak, London SE23 1EA · 020 3397 1166

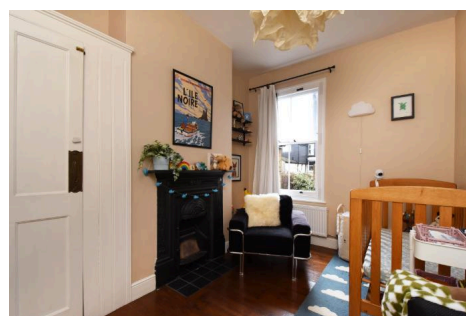
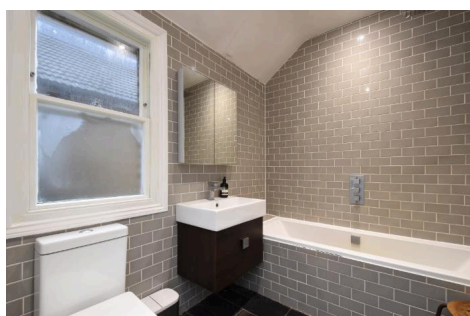
pickwickestates.co.uk · Reg No 7444750 · Registered in England

View this property online: pickwickestates.com/detail/4694/SE231EZ_whatman-road.htm

These property details are believed to be correct but their accuracy is not guaranteed and they do not form part of any official contract.

32, Whatman Road, SE23 1EZ · 5 bedroom House

£3,500 pcm



Property description

Beautifully presented and full of character, this five-bedroom Victorian terraced family home is located on a popular residential street in the heart of Honor Oak Park.

The property offers excellent kerb appeal with a classic Victorian façade, sash windows and a neat front garden.

Inside, the ground floor features a spacious double reception room with original wooden floorboards, high ceilings, a cast-iron fireplace and bay windows with plantation shutters, providing a bright and welcoming living and dining space.

To the rear is a well-appointed kitchen-breakfast room fitted with stylish cabinetry, integrated appliances and quartz worktops, with doors opening directly onto a landscaped rear garden. The garden offers decked and patio areas ideal for outdoor dining, along with a lawn and mature planting.

The first floor comprises a generous principal bedroom spanning the full width of the house, a further double bedroom, a study and a large family bathroom. The loft has been converted to provide two additional double bedrooms and a modern shower room, making the layout ideal for families and is also pet friendly.

Further benefits include restored wooden sash windows throughout (excluding the kitchen) and ample storage.



ALPS Estates Ltd trading as Pickwick Estates

47 Honor Oak Park, Honor Oak, London SE23 1EA · 020 3397 1166

pickwickestates.co.uk · Reg No 7444750 · Registered in England

View this property online: pickwickestates.com/detail/4694/SE231EZ_whatman-road.htm

These property details are believed to be correct but their accuracy is not guaranteed and they do not form part of any official contract.



32, Whatman Road, SE23 1EZ · 5 bedroom House

£3,500 pcm

Ideally positioned close to Honor Oak Park and Forest Hill stations, the property offers excellent transport links to London Bridge, the Overground and Thameslink services. The vibrant local high streets provide a wide range of independent shops, cafés, restaurants and pubs, with several popular green spaces and highly regarded schools nearby.

Property features

- Five-bedroom Victorian terraced family home
- Well presented throughout with period character
- Spacious double reception room with bay window
- Modern kitchen-breakfast room with integrated appliances
- Doors opening onto a landscaped rear garden
- Two luxurious bathrooms
- Pet Friendly
- Restored wooden sash windows throughout
- Close to Honor Oak Park & Forest Hill stations
- Near shops, cafés, green spaces and good schools



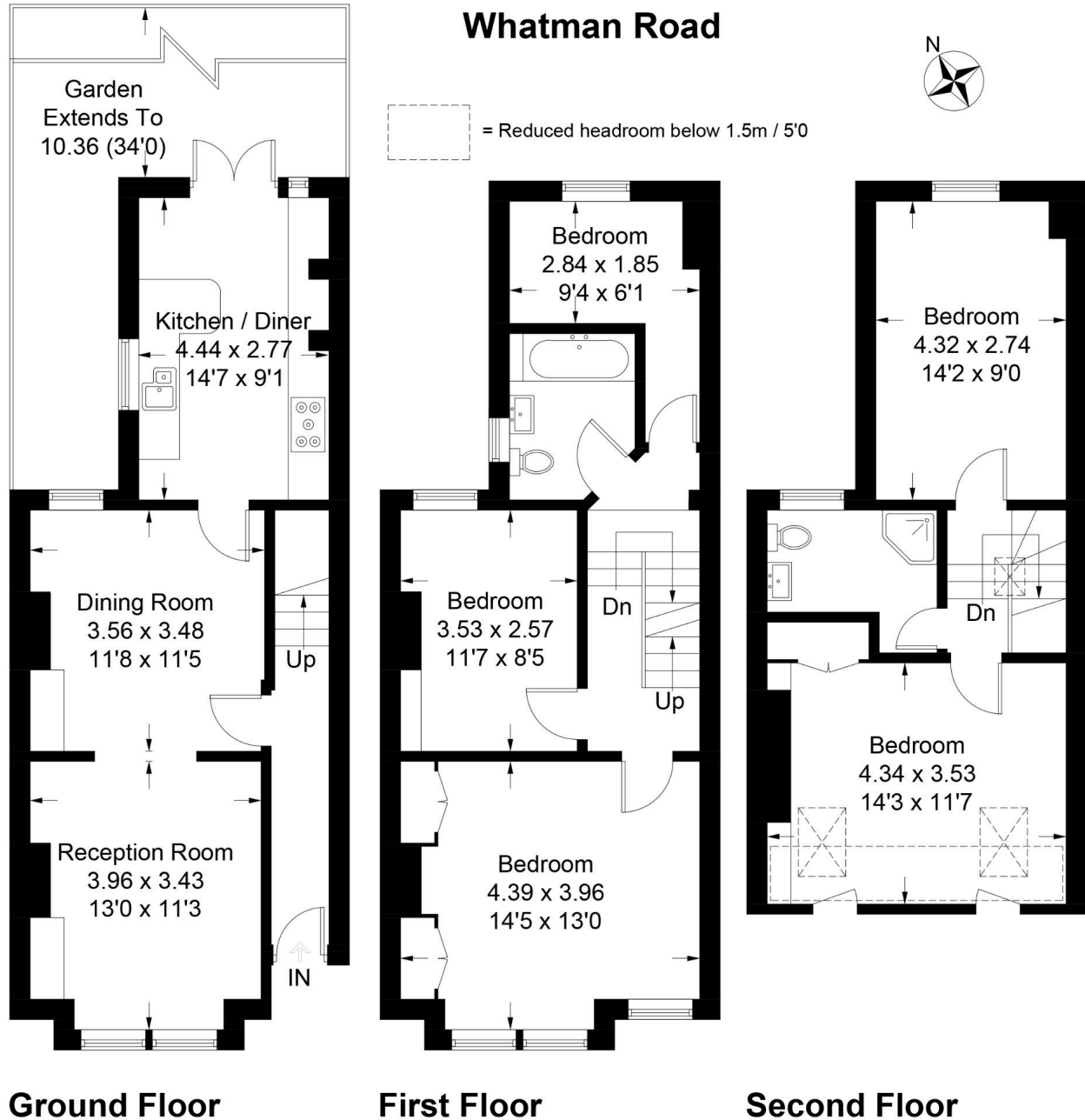
ALPS Estates Ltd trading as Pickwick Estates

47 Honor Oak Park, Honor Oak, London SE23 1EA · 020 3397 1166

pickwickestates.co.uk · Reg No 7444750 · Registered in England

View this property online: pickwickestates.com/detail/4694/SE231EZ_whatman-road.htm

These property details are believed to be correct but their accuracy is not guaranteed and they do not form part of any official contract.



Approximate Gross Internal Area = 128.7 sq m / 1385 sq ft

Illustration for identification purposes only, measurements are approximate.
Drawn for Pickwick Estates



ALPS Estates Ltd trading as Pickwick Estates

47 Honor Oak Park, Honor Oak, London SE23 1EA · 020 3397 1166

pickwickestates.co.uk · Reg No 7444750 · Registered in England

View this property online: pickwickestates.com/detail/4694/SE231EZ_whatman-road.htm

These property details are believed to be correct but their accuracy is not guaranteed and they do not form part of any official contract.